



Measures

Width	370 mm
Depth	200 mm
Height	420 mm
Weight	6 kg

Recommended amount of sauna rocks approx. 10 kg

Sauna heaters

2,1- 3,0 kW

Mini 21T and 30T

The sauna heater is intended for saunas sized 1,3-4 m³ (see the table below).

Structure

The outer casing of the sauna heater is made of corrosion-resistant, painted steel plate.

The frame is made of corrosion-resistant and heat-radiating steel. The top is made of stainless steel.

Mounting

Install the supplied wall bracket onto the sauna wall.

Install the sauna heater onto the bracket so that the control buttons are located either on the right or left side of the heater. If necessary, the top can be rotated.

Electrical installation

The sauna heaters are suitable for single-phase connections, 230 V 1N~.

Control systems

An built-in timer, thermostat and high temperature limiter are located on the side of the sauna heater.

The thermostat sensor is located inside the sauna heater.

Timer functions:

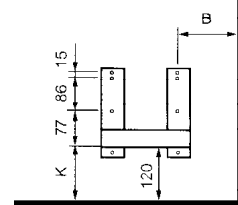
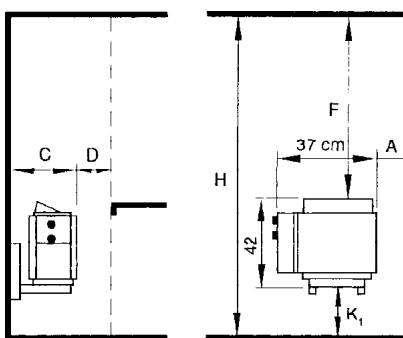
0-8 h Pre-setting time

0-4 h Heating time

Model	Type	Power kW	Sauna room volume m ³	Min. inner height of sauna m
Mini 21 T	1202-21-1718	2,1	1,3 - 2,5	1,9
Mini 30 T	1202-30-1718	3,0	2,0 - 4,0	1,9

CE, (F)

Sauna heater safety distances and wall mounting.



Sauna heater kW	Minimum distances (mm)						
	A	B	C	D	F	H	K ₁
2,1	30	90	200	30	1250	1900	120
3,0	30	90	200	60	1250	1900	120

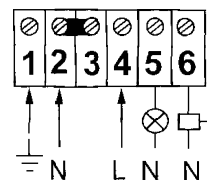
Electrical connections

The sauna heater shall be installed with a semi-fixed connection H07 RN-F, or by using a rubber cable of equivalent quality.

1-phase connection

Power kW	Cable mm ²	Fuse A
2,1	3 x 1,5 S	10
3,0	3 x 2,5 S	16

NOTE: Always follow local regulations!



5. signal light
6. electrical heating control



Saunatec Ltd
P.O.Box 15
10901 Hanko
Tel +358 19 2807 300



230V 1N~